

## Purified Anti-Human CD180 Antibody[MHR73-11], Functional Grade

catalog number: AN003260

**Note:** Centrifuge before opening to ensure complete recovery of vial contents.

### Description

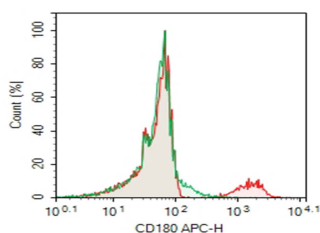
<b>Reactivity</b>	Human
<b>Immunogen</b>	Recombinant Human CD180 protein
<b>Host</b>	Mouse
<b>Isotype</b>	Mouse IgG1, $\kappa$
<b>Clone</b>	MHR73-11
<b>Purification</b>	>98%, Protein A/G purified
<b>Buffer</b>	Sterile PBS, pH 7.2. < 1.0 EU per mg of the antibody as determined by the LAL method.

### Applications

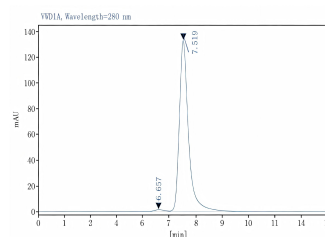
### Recommended Dilution

<b>FCM</b>	2 $\mu$ g/mL (0.5 $\times$ 10 <sup>6</sup> -1 $\times$ 10 <sup>6</sup> cells)
------------	---

### Data



Human peripheral blood lymphocytes were stained with 0.2  $\mu$ g Purified Anti-Human CD180 Antibody[MHR73-11], Functional Grade (Right) and 0.2  $\mu$ g Mouse IgG1,  $\kappa$  Isotype Control (Left), followed by APC-conjugated Goat Anti-Mouse IgG Secondary Antibody.



Monomer purity  $\geq$ 95% as determined by analytical size-exclusion chromatography (SEC)

### Preparation & Storage

<b>Storage</b>	Store at 4°C valid for 12 months or -20°C valid for long term storage, avoid freeze / thaw cycles. This preparation contains no preservatives, thus it should be handled under aseptic conditions.
<b>Shipping</b>	Ice bag

### Background

CD180, also known as RP105, is a 105 kD member of the toll-like receptor (TLR) family and is expressed on most B cells, monocytes/macrophages and dendritic cells. The TLR family's structural characteristics are critically involved in protein-protein signaling interactions leading to the activation of the innate immune system. Additionally, MD-1, a secretory protein, associates with CD180 (RP105) at the cell surface and this complex, in conjunction with TLR4, recognizes bacterial LPS. The human CD180 (RP105) gene maps to 5q12. The MHR73-11 antibody is able to activate B cells and to protect against irradiation- or dexamethasone-induced apoptosis.

None (Azide-Free, Low Endotoxin) are perfectly suited to be used in culture or in vivo (for nonhuman studies) for functional assays blocking, neutralizing, activation or depletion where the presence of azide may damage cells or exogenous endotoxin may signal or activate cells.

### For Research Use Only